






# HOSPITAL - EXAM ROOM

 [www.allsouthflooring.com](http://www.allsouthflooring.com)  704.690.1871  300 Forsyth Hall Dr, Ste B  
Charlotte, NC 28273  [info@allsouthflooring.com](mailto:info@allsouthflooring.com)

**PROJECT OVERVIEW**

**Location**  
Georgia





**Architect(s)**  
\*\*End-User Specified\*\*

**Completion Date**  
2020

**Applications**  
Healthcare



**AmericanBiltrite**

 [www.allsouthflooring.com](http://www.allsouthflooring.com)  704.690.1871  300 Forsyth Hall Dr, Ste B  
Charlotte, NC 28273  [info@allsouthflooring.com](mailto:info@allsouthflooring.com)



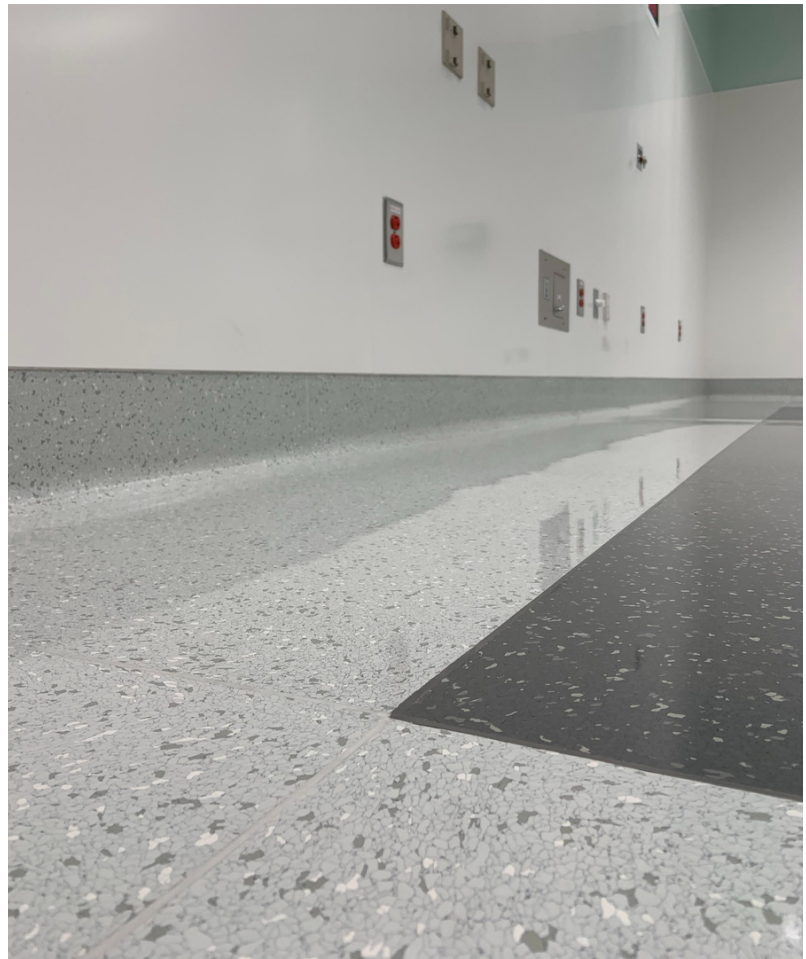
## MATERIAL SPECIFICATIONS

AB Texas Granite | 36"  
37 - Grey

AB Texas Granite | 36"  
17 - Luxe Grey















[www.allsouthflooring.com](http://www.allsouthflooring.com)



704.690.1871



300 Forsyth Hall Dr, Ste B  
Charlotte, NC 28273



[info@allsouthflooring.com](mailto:info@allsouthflooring.com)





## Photo Credit(s):

All South Flooring - Sean Mitchell



[www.allsouthflooring.com](http://www.allsouthflooring.com)



704.690.1871



300 Forsyth Hall Dr, Ste B  
Charlotte, NC 28273



[info@allsouthflooring.com](mailto:info@allsouthflooring.com)